

(APP)	VDF
PORTOROŽ APPROACH 129.32	
(APP) If no reply on PORTOROŽ APP, contact:	
LJUBLJANA APPROACH 118.75 135.27	
(TWR)	VDF
PORTOROŽ TOWER 129.32	

LJPZ
ELEV 7' / 2 m

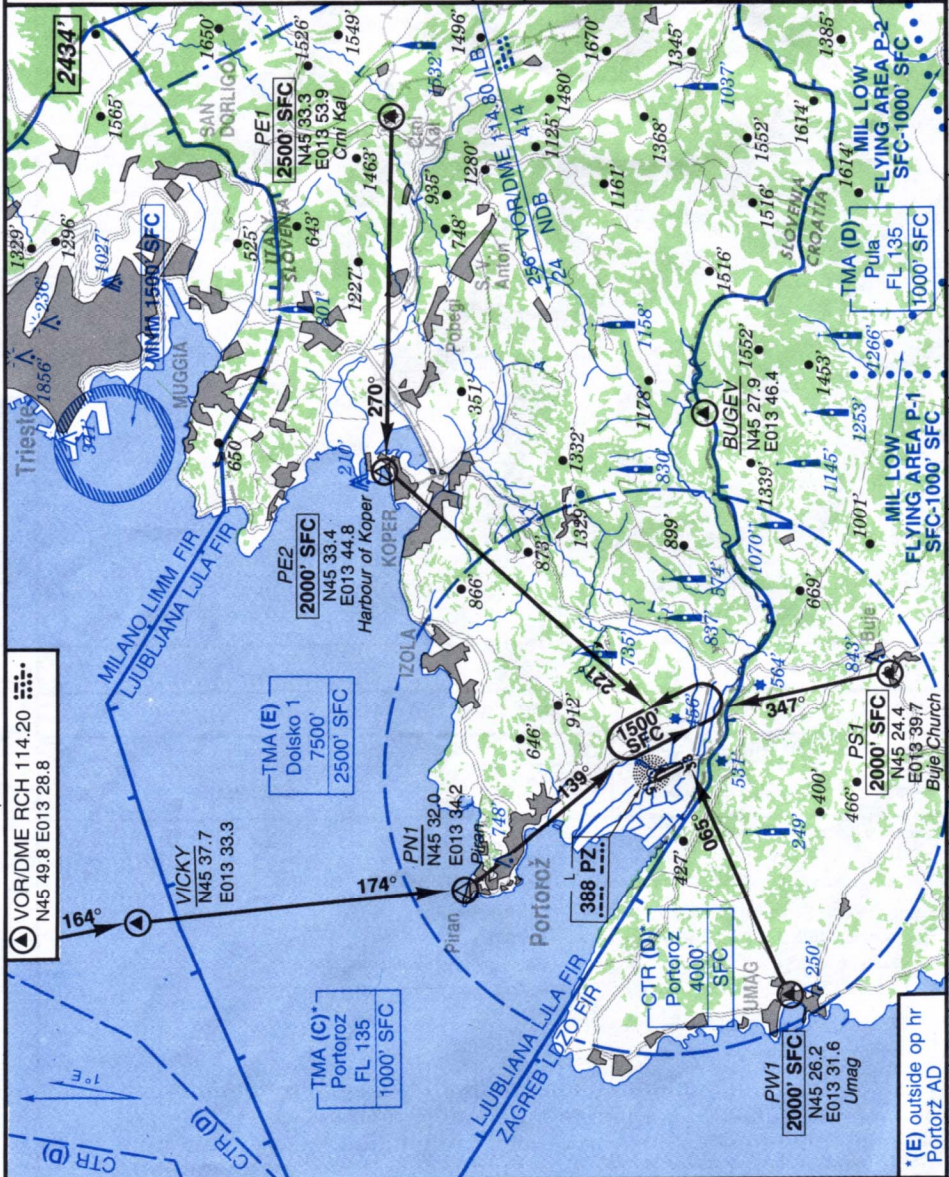
N45 28.4
E013 36.9

3.2 NM SSE Portorož

RWY	ILS	RWY	ILS

SCALE 1 : 250 000

CHANGES: COM - Airspace - VOR/DME "RCH" established - REP "BUGEV" - OBST.



PORTOROŽ
PORTOROŽ
SLOVENIA

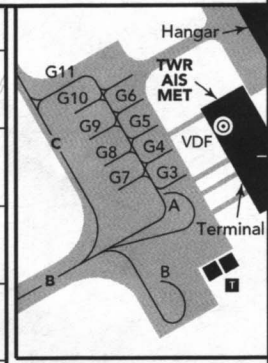
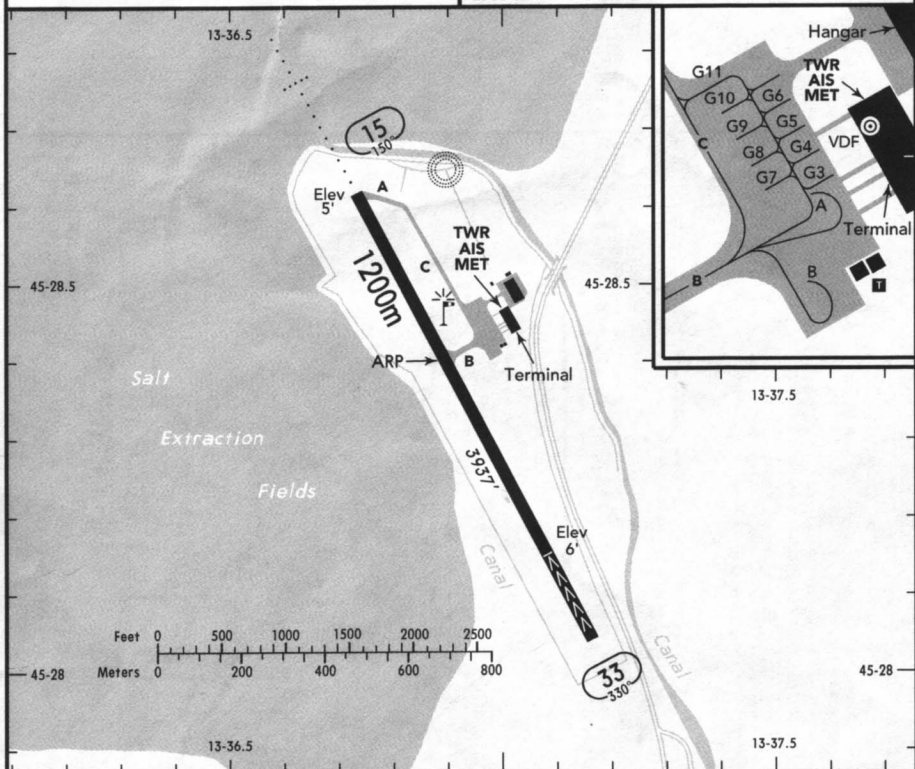
19-2 20 SEP 02

JEPPESSEN



(FIS)

LJUBLJANA INFORMATION **118.47**



ALS 15 - PAPI 15 (3.2°) - THRL 15 - RL - TWYL (TWY "B") - APRON - WDI.

RWY No	Dimension (m) - Surface	TORA (m)	LDA (m)	Strength	Lights
15	1200 x 30 Asphalt	1200	1200	LCN 28	
33		1200	970		

Caution:

Sea bird strike hazard present throughout the whole year.
 THR 33 not visible from TWR. Caution is advised during LDG/TKOF.
 Enter TMA (C) Portorož via VICKY, BUGEV, PE1, PW1 or PS1.
 Contact PORTOROZ APPROACH as soon as possible.
 For flights within CTR (D) Portorož, two-way radio communication is required.
 Contact PORTOROZ TOWER 5 MIN prior to reaching the first reporting point.

Flights shall enter CTR (D) Portorož as follows:

from NW: VICKY - PN1, from S: PS1,
 from E: PE1 - PE2, from W: PW1.

Aerobatics within CTR (D) Portorož is permitted only outside inhabited area above 4000'.

Grass parking for GA is AVBL.

When parking stand A is occupied, stands G3, G4 & G7 are not AVBL; stand G11 is used as taxilane.